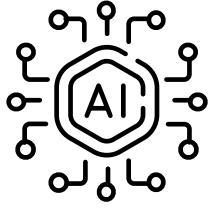


# UNDERSTANDING AI MODELS

A GUIDE FOR L&D PROFESSIONALS





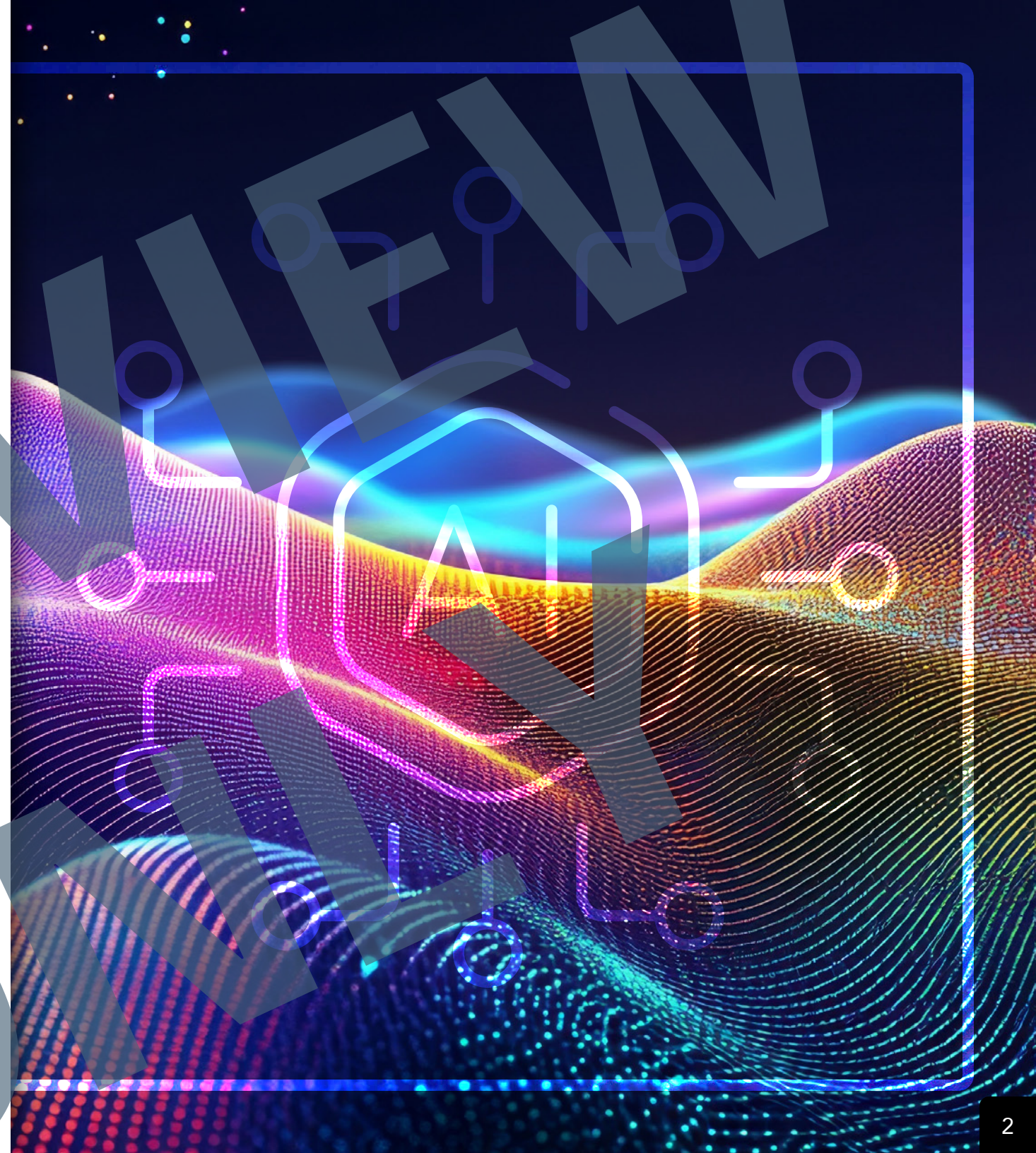


# INTRODUCTION

Artificial intelligence has revolutionized industries worldwide, including Learning & Development. The rapid evolution of AI technologies has created a complex landscape of terminology that is often misunderstood or used interchangeably.

For L&D professionals, understanding AI is essential for making strategic decisions about technology integration, vendor selection, and training program development. While AI has long powered familiar tools like spam filters and recommendation engines, recent breakthroughs in Large Language Models (LLMs) have dramatically expanded both AI's capabilities and accessibility.

This guide offers L&D professionals a clear understanding of various AI models, their practical applications, and their significance in corporate training and education.





# THE AI ECOSYSTEM: From General to Specific

Think of AI as a nested structure, with broader categories encompassing more specialized technologies.



## Artificial Intelligence (AI)

The broadest term, covering any computer system designed to perform tasks typically requiring human intelligence—including problem-solving, pattern recognition, and decision-making.



## Machine Learning (ML)

A subset of AI where systems learn patterns from data to make predictions or decisions without explicit programming.



## Deep Learning

A type of machine learning that uses artificial neural networks to model and solve complex problems, inspired by the structure and function of the human brain, particularly how neurons work.



## Generative AI

A specialized branch of AI focused on creating new content—text, images, audio, or video—rather than just analyzing or classifying existing data.



## Large Language Models (LLMs)

A subset of generative AI specifically designed for human-like text generation and conversation.